



RUB-A-DUB PRE-SCHOOL PROSPECTUS

**A place to play, learn
and grow together.**



Welcome!

A place to play, learn and grow together

Welcome to Rub-A-Dub Pre-school!

We know that choosing a childcare provider can be one of the most difficult decisions any parent / carer can make. Your child's early years are a time of discovery, learning new skills, growth and becoming more independent, and any parent wants their child to be in an environment that is safe, fun and stimulating.

Rub-A-Dub was established in 1987, so we have many years of experience caring and helping children to learn and develop.

This prospectus aims to provide you with an introduction to Rub-A-Dub, our approach to supporting your child's learning and development and how we aim to work together with you to best meets your child's individual needs.

Helping your child grow!



"You cannot make people learn. You can only provide the right conditions for learning to happen."

Vince Gowmon



Our Vision

Our vision is to provide a caring and secure environment, where children:

- Feel safe to explore the world around them through play and the experiences we offer
- Develop listening and communication skills to become confident communicators
- Learn to be healthy and active
- Develop good manners and appropriate behaviours
- Learn to respect and value all individuals
- Develop imagination, exploration, investigation and independent thinking
- Create a love of learning
- Celebrate similarities between people and cultures
- Build on strengths
- Are motivated to do their best and fulfil their potential

But most of all, we want children who come to Rub-A-Dub to be happy!

Our Aims

At Rub-A-Dub we aim to provide the best for each individual and their family. We believe that children learn best through play and aim to provide an environment that supports high quality play opportunities both indoors and outdoors.

'Play is often talked about as if it as a relief from serious learning. But for children play is serious learning. Play is really the work of childhood'

Fred Rogers



Philosophy of Care

At Rub-A-Dub we aim to provide a caring, supportive and stimulating environment.

We treat each child as an individual, getting to know them and what their interests are. Each child will have their own key person.

Whilst play is child-initiated, we aim to provide activities that will enable the children in our care to learn skills through playing. These activities will be based on knowing our children and what interests them

We encourage outdoor play – the garden is our second room! We extend this learning with our Forest Rangers.

We look at developing strong relationships with our parents and families to help support their child at our pre-school. We appreciate the role parents and families have in their child's learning and development.

Our staff have high expectations of all children. We have systems in place to monitor how each child is developing to ensure that they reach their full potential in the time they are with us.

We have an effective curriculum in place and we make sure that it supports all children including those with additional needs, those who are disadvantaged or in minority groups, ensuring inclusion for all.

“Childhood is not a race to see how quickly a child can read, write and count. It is a small window of time to learn and develop at the pace that is right for each individual child. Earlier is not better.”

Magda Gerber



Our Pre-school



Rub-A-Dub was established in 1987. We started out as a play group and evolved into the pre-school we are today. Based at the Lansdowne Village Hall in the village of Derry Hill, we are located in a room with its own access.

The hall has a large garden which we have direct access into. Within the garden we have a lovely wooden play house, sandpit, mud kitchen and large climbing frame and slide. There is a raised bed where the children are encouraged to help plant and look after a variety of plants. We have a wide range of equipment for the children to use outdoors.

Outdoor play is core to our philosophy. We encourage children to be outside as much as possible, which is why we ask parent to ensure that their child has a warm coat and if possible, wellies. We do have a supply of wellies and waterproof coats and trousers if needed.



Indoors the room is bright and airy. Each day the staff set up various activities for the children to do if they want to.

The children have access to various 'toy boxes' that they can choose from, for example, building blocks, cars, or animals. Our store room is easy to access if a child expresses an interest to play or do something that day and the items are not out.

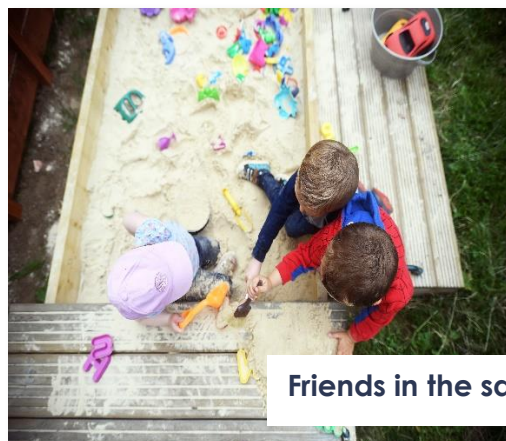
We also ensure that there is a cosy corner for children to go to if they want to look at a book, or just be somewhere a little quieter.



Rub-A-Dub Gallery....



An al fresco lunch



Friends in the sandpit



Climbing frame in the garden



Play house



Rangers in the forest



Water play

Forest Rangers

On Wednesdays, we have access to an area on the Bowood Estate when we are able to take the learning outdoors for part of the day. The children may be making dens, collecting treasure, listening to a story or playing games. The benefits include:

- Growth in Confidence
- Social skills
- Communication
- Motivation and Confidence
- Physical skills



More importantly it is fun! The children will be learning, exploring and discovering in an environment that they may not normally have access to.

Children who participate in outdoor play are generally believed to be happier, but who wouldn't be happier being outdoors in the fresh air, having fun and getting mucky!

The session is open to all children; however, children must be toilet trained or on their way, i.e., using pull-ups. Your child will need warm clothing, waterproof coats/trousers

and a pair of wellies. Regardless of the weather the session will go ahead so it is important that your child is appropriately dressed. If you do not have suitable outer clothing please speak with our manager as we do have spares coats and trousers available to borrow in order to be part of this session.

If you are offered a place, parents will receive more details about Forest Rangers in an information pack.



"Anything you can teach in an indoor classroom can be taught outdoors, often in ways that are more enjoyable for children."

Cathy James



Parent Partnership

Working in Partnership

Parents, Guardians and Families

As we are a charity, you will be regarded as members of our pre-school and have full participatory rights, as outlined in our constitution. You also have a right to be: valued and respected; kept informed; consulted; involved and included at all levels.

A good carer and parent relationship has a positive impact on a child's learning and development in their early year's education. We aim to work in partnership with our parents in providing care and education for their children. There are many ways we build a partnership with parents including:

- Exchanging knowledge about their children's needs, activities and interests
- Asking parents to contribute to the progress check at age 2
- Parents evenings where staff can provide more details about your child's development
- Activities of the day are detailed under 'newsfeed' on Famly so that parents can ask their children about their day on their trip home

Famly

Famly is an online system that allows us to share your child's learning and development as well as a means of communicating with you.

The Famly website can be accessed on a computer or laptop as well as via their app on any Apple or Android device such as a tablet or smartphone. Staff are able to upload photos and observations of your child in an instant. You will receive a notification



when a new item has been uploaded to your child's account. You will also be able to add comments to any of the pre-school's messages and even upload your own observations or photos from home. Parents will only have access to their own child's account, and will not be seen by other parents.

Upon joining Rub-A-Dub parents will receive more information about Famly, including how to access the app.

Other ways to get involved

Rub-A-Dub encourages parental involvement but recognises the fact that parents and carers now live very busy lives. We offer a variety of ways to get involved and we hope that our parents do try at least one of these in their time with us! Parents can get involved in:

- Helping out at sessions including Forest Rangers
- Joining the committee and help manage the setting
- Get involved when we run special events, such as 'Den Building with Dads and Grandads'
- Join in community activities in which Rub-A-Dub takes part, such as the Studley & Derry Hill Fete
- Help with running fundraising activities
- Helping to look after the equipment the children use, such as washing dressing up outfits
- Help support the purchase of consumables by paying the Voluntary Family Donation

Find us on Facebook

Search for Rub-A-Dub pre-school click LIKE and you will be able to follow our activities. We also post updates on events on Facebook.



What our parents say

From our most recent Parent Survey (2022)

"My child particularly enjoys the Rising Stars session and Forest Rangers is also really good too. I like the emphasis Rub-A-Dub has on playing outdoors as we indoors – whatever the weather!"

"I am so very grateful for the education you gave XXXX and are continuing to give to XXXX. Having a child with complex physical needs makes me more appreciative of how open, inclusive and supportive a setting Rub-A-Dub is. Thank you."

"Rub-A-Dub is a really good setting and both my children have loved their time there and developed a lot. The staff are great and do a fantastic job for the children."

"It is always lovely to be greeted each morning by happy, smiley staff. I have been incredibly happy with Rub-A-Dub."

"Having been a Rub-A-Dub parent now for 8 years I honestly couldn't have asked for a more nurturing, safe environment. The team that is in place at present are wonderful and XXXX has settled so well with you all."





Rub-A-Dub Management

Rub-A-Dub is a charitable trust registered with the Charity Commission. Families who are registered with Rub-A-Dub make up our membership in line with our constitution.

To manage the charity, and therefore the pre-school, trustees are elected by the parents who attend. The elections take place at our Annual General Meeting, although trustees may be appointed during the year. Together the Committee are responsible for the overall management and smooth running of the pre-school, by:

- Managing the finances
- Employing and managing staff
- Making sure policies are in place and are being followed
- Making sure we working in partnership with our parents
- Raising funds for the pre-school

Our manager and team are responsible for the day to day running of pre-school.

All parents are invited to the AGM. We encourage attendance as it provides the committee an opportunity to look back over the previous year, share future plans and provides a place for parents to ask questions.

As a voluntary committee manages pre-school we depend on the goodwill of parents and their involvement to keep going. The success of the pre-school depends upon parents and friends supporting us and joining our committee. As a registered charity this means:

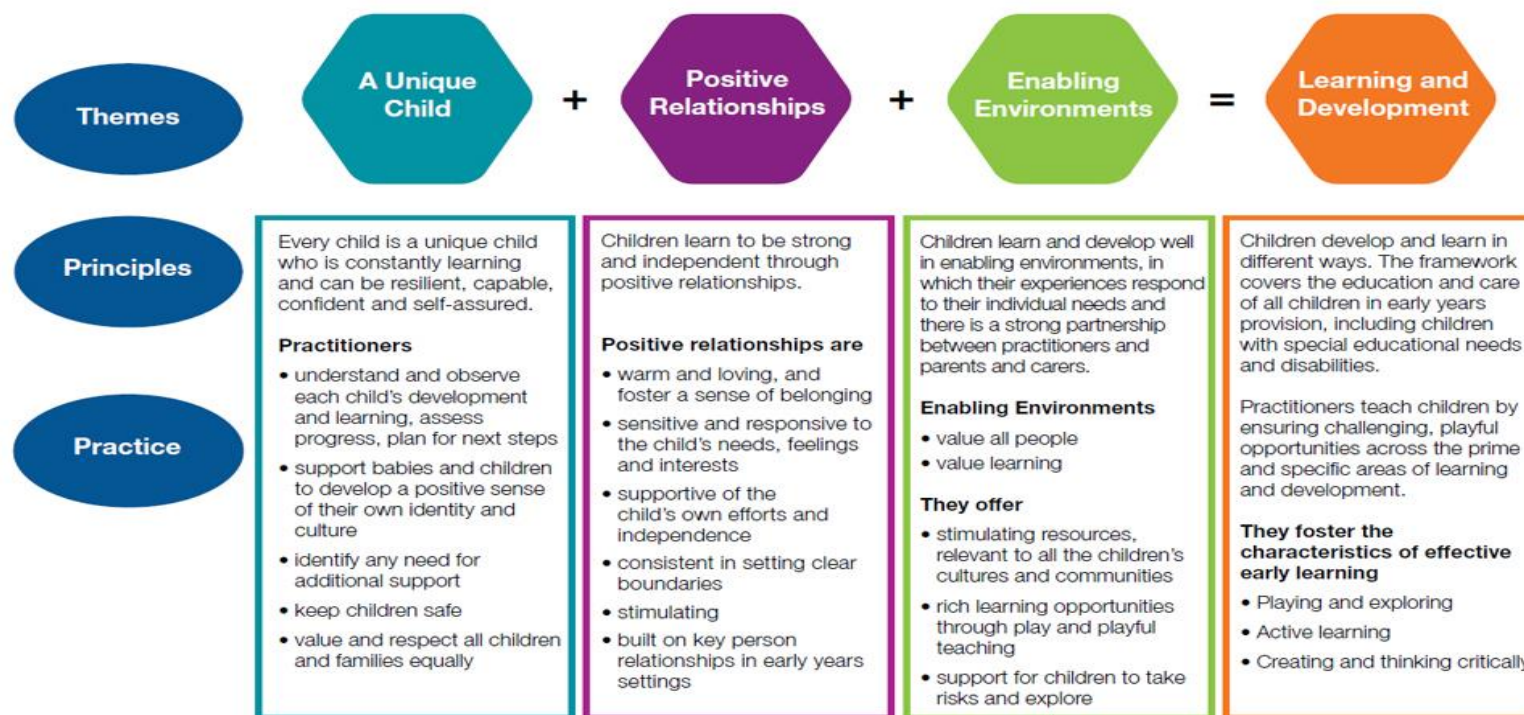
NO Committee NO Rub-A-Dub!

Together we can support the pre-school so that it will continue to be an outstanding community service long into the future.

The Early Years Foundation Stage

The Early Years Foundation Stage (EYFS) outlines what providers must do to help children learn and develop to be healthy and safe.

The EYFS outlines 4 overarching principles:



Development and Learning

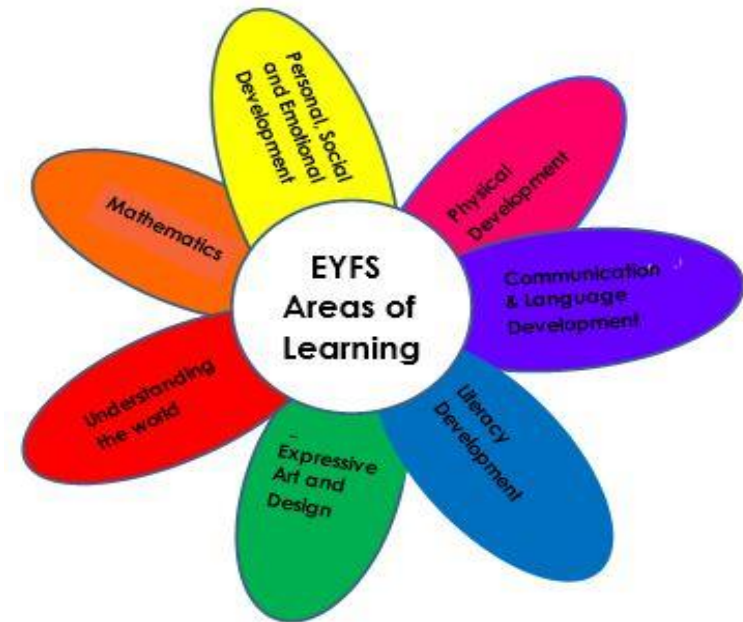
There are seven areas of learning and development in the EYFS. All areas are important and inter-connect. Areas are crucial in igniting curiosity and an enthusiasm for learning. The prime areas are strengthened through the specific areas and are embedded throughout:

The 3 prime areas are:

- Communication and language
- Physical development
- Personal, social and emotional development

The 4 specific areas are:

- Literacy
- Mathematics
- Understanding the world
- Expressive arts and design





How we help your child learn and develop

We believe that discovering what your child is interested in helps our team to encourage your child through play to learn and develop. Whilst play is often child lead, our staff will also plan activities each day to encourage exploration and learning.



Communication and language

We aim to provide children opportunities to experience a rich language environment; to develop their confidence and skills in expressing themselves and to speak in a range of situations.

Through storytelling, poetry, rhymes and singing, children will have a variety of opportunities to hear new words and to practise speech. Children are encouraged to join in and to recall what they are hearing.

We will engage in conversations and discussions with all children as this provides opportunities for children to

articulate their ideas and thoughts and connect ideas or actions to another.

Children will learn to follow instructions and directions and to focus their attention. Children will also learn to take turns to listen to each other and take turns in speaking.





Physical development

Physical activity is vital in children's all-round development, enabling them to pursue happy, healthy and active lives.

At Rub-A-Dub we have a large garden that children can access throughout the day.



The garden has a lovely playhouse and mud kitchen as well as a sandpit and climbing frame, all of which makes the outdoors an inviting place to explore and play games to develop their core strength, stability, balance, spatial awareness co-ordination and agility. We also have plenty of outdoor equipment such as bikes.

To help develop fine motor skills, we also provide activities such as crafting, painting, puzzles, and chances to use small tools, such as gardening tools.



Personal, social and emotional development

We help children to develop a positive sense of themselves and others; form positive relationships and to respect each other; develop social skills and how to manage their feelings; to understand what is appropriate behaviour and to have confidence in their own abilities.



Children learn to play in groups both small and large. We provide opportunities for the children to work together as a team. We encourage friendly behaviour and to consider what their actions may have on others.

We encourage children to express their feelings, through words like 'sad', 'upset' or 'angry'. We will acknowledge children's feelings and if appropriate talk with them on how to manage their feelings, what they could do to make them feel less 'sad', 'upset' or 'angry'. Children are given opportunities to learn about their feelings, for example this may be through a story followed by a discussion or in small groups using resources such as puppets.



Our room is set up to allow children to make choices about what activities and resources they would like to engage with that day. This fosters an environment where children have opportunities to make choices together, take turns, to ask to join in with others, to play together in a positive way. This also allows children to learn that they may have to wait their turn and that sometimes you have to compromise. We rotate the resources on a regular basis, but if a child expresses a wish to play with something specifically, we will bring those items out.

Children will follow simple routines to encourage independence; putting their name on a drawer on arrival, putting their own coats on, being independent at snack time, putting on wellie boots on their own, participating in tidying up. We also work closely with parents when their child is ready to start using a potty or toilet.



Mathematics



There are many games and activities where children learn about numbers and number language. Games involving jumping and clapping provide opportunities to count.

Our 'table top' activities may involve having sets of objects to count or matching the number of objects to the number; sorting out different coloured objects then counting with the children to see which is the biggest.

When children are at play, we will ask questions of the children to prompt discussion around different sizes, weights and lengths. For example, when playing with building blocks we may ask what blocks are the biggest, or heaviest.

We also introduce children to different shapes using puzzles and games. When looking at shapes we may ask if children can spot the difference, say between a triangle and square.



We aim to show children that numbers and shapes are all around them and encourage them to be curious.



Literacy



Developing a love of stories and books is important for language development. At Rub-A-Dub our book corner is available every day to encourage children to pick up and look at a book.

Children love to share a book with others or with a member of staff. We have a range of books (fiction and non-fiction) as this can also help children understand that books can provide information and help answer questions.

As well as spontaneous storytelling, we have regular storytelling either as whole group, or in smaller groups.

Children are encouraged to look at the pictures and to describe what they see or perhaps what they think is, or is going to happen. Reading with the children, they learn that you read a book from left to right, top to bottom!

Children will have opportunities both indoor and outdoor to mark making, a precursor to learning to form letters. This may be in the form of crayons and pencils on paper, chalk on boards, painting or even using water outside on a hard surface!



At the setting parents will see various labels around the room, such as name labels, toy boxes, other items the children regularly use. The children become familiar with symbols and key words such as name cards for labelling their drawer, or peg where they put their coat.



We gently introduce children to phonics, using games and singalongs. Reading and singing rhymes with the children encourage children to recognise similar sounding words and syllables.

Understanding the world

Children from an early age try to make sense of their world. They are curious about their environment and the people around them.



Our dressing up and home corner provides opportunities to role play and to act out 'grown up' roles like being a shop keeper, cook, doctor or superhero! At Rub-A-Dub we also like to broaden a child's world through stories, crafts and celebrating other cultures, for example Chinese New Year.

Indoors and outdoors, we encourage the exploration of the physical world. Activities like water play, the sandpit and mud kitchen mean children can experiment with different materials and observe what happens if you mix materials together.

We encourage children to look at what is around them, leaves, trees, plants. We also provide opportunities to look at material that we may not have easy access to such as shells and pebbles from a beach.



Providing equipment such as magnifying glasses encourages curiosity in children and develops a desire to explore what is around them.

We also have a lovely raised bed and we encourage children to help grow seeds, bulbs and plants. This provides an opportunity to learn what plants need to grow and stimulate discussions about where our food comes from.



Expressive arts and design

Music, art and dance! Children have access to lots of art activities. From painting to drawing, to playdough to using various materials to create art!



Art and crafting provide opportunities to learn about colours and what happens when you mix them together. Having lots of different materials available allows children to learn about textures.

Music is also used at Rub-A-Dub to encourage to express themselves either through dance or playing instruments in rhythmic way. Children love to sing and this is encouraged at Rub-A-Dub.

Children also have access to a wide range of resources such as building blocks – both large and small – to create structures. They learn what shapes work together and what don't, as well as how to balance structures so they don't fall down!

Most of all, we encourage children to use their imaginations! Resources such as dressing-up allow the children to create a new role for themselves, other activities such as story sacks encourages them to make up their own stories from a handful of items. This is extended outside where the bigger building blocks are used to create structures and the children make-up their own games.





Our Team

Manager	Deputy Manager	Snr Pre-school Assistant & Senco Lead
Natalie Bolt	Alex Paddon	Nicola Ward
Natalie joined us in 2011 & promoted to Manager in 2014. Since taking on the position of manager she has done sterling work in implementing curriculum changes as well as keeping on top of the requirements set by Ofsted and the Government. Natalie is qualified with a Level 3, Children and Young People's Workforce Diploma.	Alex has been a long-standing member of our team and is a firm favourite amongst children and parents alike! Alex has achieved her Level 3 qualification in Childcare and was promoted to Deputy Manager in 2019, she also is our Forest Rangers leader!	Nicola joined the team in November 2018 and has become a firm favourite amongst parents and children. In 2022 she became our SENCO Lead. Nicola has a Level 3 qualification in Childcare.

Pre-school Assistant	Pre-school Assistant
Lucy Clayton	Jane Bailey
Lucy joined in November 2020 and has come with over 11 years of childcare experience. Lucy has a Level 3 qualification in Childcare and is a welcome addition to the team!	Jane joined the team in June 2022. Jane has a Level 3 qualification in childcare as well as a Forest School qualification and is a key member of our Rangers team as well as the After-school club.
Bank staff	Bank staff
Susan Retter	Jacqui Sykes
Susan's children came to Rub-A-Dub and lives locally. Susan is much loved by the children and is a valued Bank staff member.	Jacqui is a local childminder and over the years many parents have shared their childcare between us. Jacqui has a Level 3 qualification and many years of experience.



Opening hours

We are open term time only and our calendar can be found on our website on the Downloads tab.

We open at 8.30am and close at 5.30pm 5 days a week. However, Fridays from 12pm is for our Rising Stars only.

The pre-school's session times are:

- 8.30 or 9pm -12pm
- 12-3pm
- 9-3pm

Parents have the option to extend the day as we also offer an After-school Club for our pre-schoolers and children attending Derry Hill Primary school. Collection times are: 4pm, 4.30pm 5pm and 5.30pm.

Early years funded entitlement may be used from 8.30 to 5.30pm.

If you require a morning session to 1pm please speak with our manager as we may be able to accommodate your request.

Specialist Sessions

Forest Rangers

Rangers is on Wednesdays 9am to 12pm. We start and finish at the hall.

We also offer a number of spaces at the Hall on Wednesday mornings if you do not wish to attend Rub-A-Dub Rangers.

To ensure the safety of the children, numbers are limited.

There is an additional charge for this session due to extra staffing for safety. Please see our website for further details

Rising Stars

This session is on Friday afternoons from 12pm to 3pm. This session is dedicated to those children who are going to primary school the following September.

There is no additional charge to attend this session.

Fees

We aim to offer value for money and keep fees as low as possible. As a charity we make every effort to mitigate costs whilst still providing a high-quality service. Our current fees and charges can be found on our website on the Fees and Funding tab. We do not charge a registration fee.



Policies

Our staff can explain our policies and procedures to you. Copies can also be made available. Our policies help us to make sure our service is a high quality one and that children and parents have an enjoyable and beneficial experience with us.

Special Education Needs and Disability (SEND)

Children with SEND needs are welcome at Rub-A-Dub and we take account of any special needs a child may have. We work closely with parents to ensure needs are met and to provide the best experience possible.

Our Special Educational Needs Co-ordinator is Nicola Ward.

Safeguarding

Rub-A-Dub has a duty under law to help safeguard children against suspected or actual 'significant harm'. We are committed to building a 'culture of safety' in which children, young people and vulnerable adults are protected from abuse and harm in all areas of service delivery.

A copy of our Safeguarding Policy can be found on our website on the Downloads tab.

Our Designated Safeguarding Leads are Natalie Bolt (Safeguarding Lead) and Alex Paddon (Deputy Safeguarding Lead).

Your child will need:

- Nappies/pull-ups, nappy bags & wipes if not yet toilet trained
 - Two spare sets of clothes in a bag including pants!
 - A warm/waterproof coat for cold days + hat & gloves
 - A jumper or cardigan everyday
 - A pair of named wellies (we do have spares)
 - Sun cream on sunny days
- Please apply sun cream before your child comes to Rub-A-Dub

PLEASE NAME ALL ITEMS

Lunch and Morning Snack

If your child is in for the morning session please provide a healthy snack, such as a piece of fruit, in a named container.

If your child is at the setting for lunch (12pm to 1pm) please ensure your child has a healthy pack lunch in a named bag/box.



Lastly,

We encourage parents and guardians to visit Rub-A-Dub to meet our staff and to discuss any questions you may have. To book a visit please call us on 07894 073865 when we are open, or leave a message and we will call you back. Alternatively email at rubadubpreschoolenquiries@gmail.com

If you wish your child to attend Rub-A-Dub please contact us for a registration pack. Included in the pack will be a registration form which needs to be completed and returned to the setting. Our manager will then be in touch with you confirming your sessions and to organise a date and time for you and your child to attend an induction session, which will be nearer to your chosen start date.

We hope you and your child will enjoy joining us at Rub-A-Dub and becoming part of our community. Our staff are always and willing to discuss any questions you may have.

"To raise a child who is comfortable enough to leave you means you've done your job. They are not ours to keep, but to teach how to soar on their own."

Anonymous